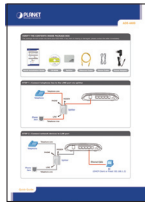


VERIFY THE CONTENTS INSIDE PACKAGE BOX

The package should contain the items plus ADE-4400. If any item is missing or damaged, please contact the seller immediately



Quick Installation Guide



CD-ROM



Splitter



Ethernet Cable

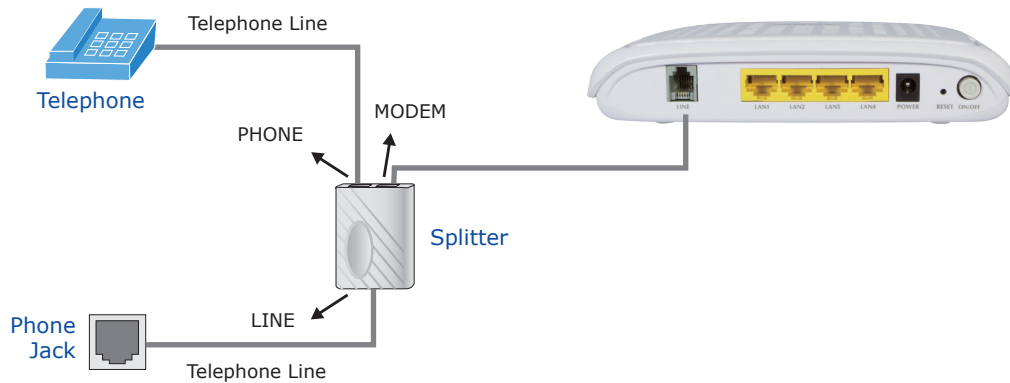


Phone Cable

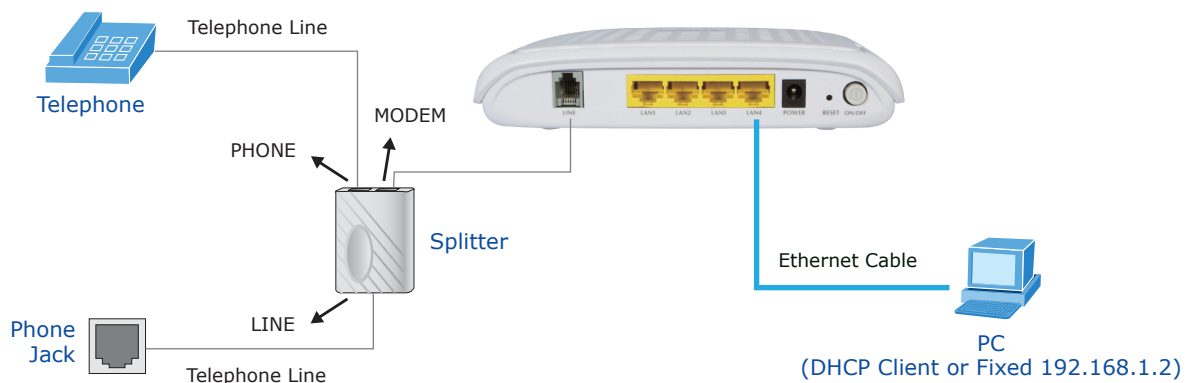


Power Adapter

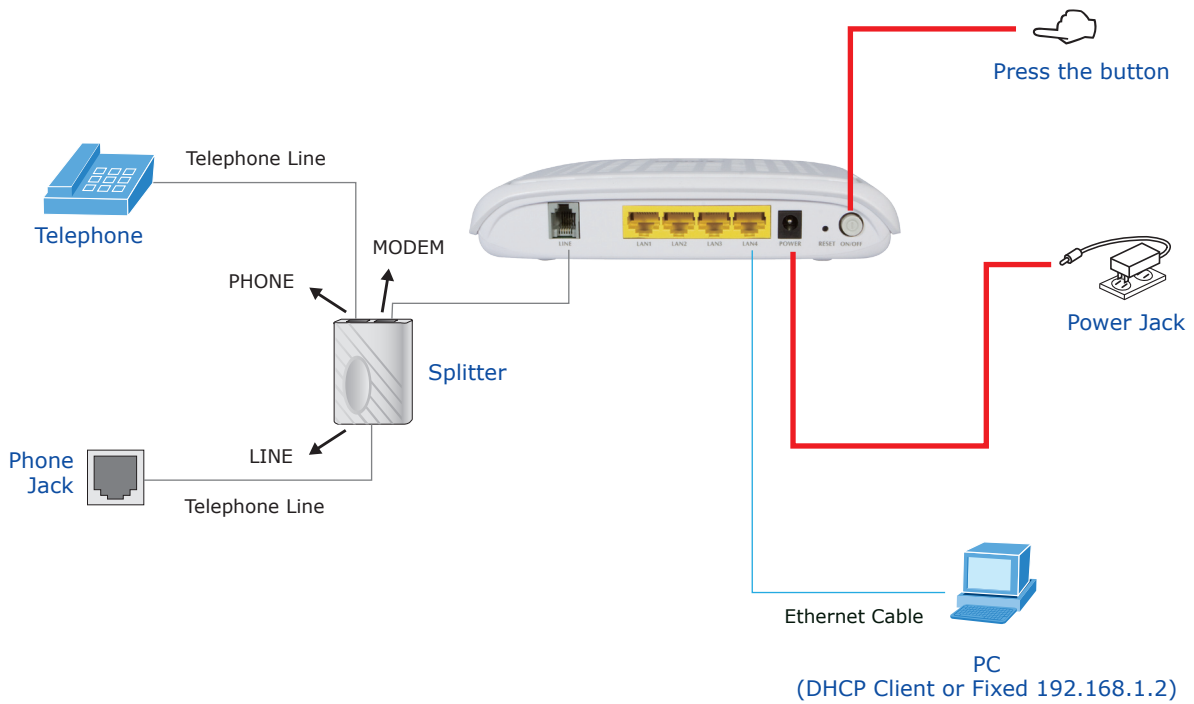
STEP 1 : Connect telephone line to the LINE port via splitter



STEP 2 : Connect network devices to LAN port

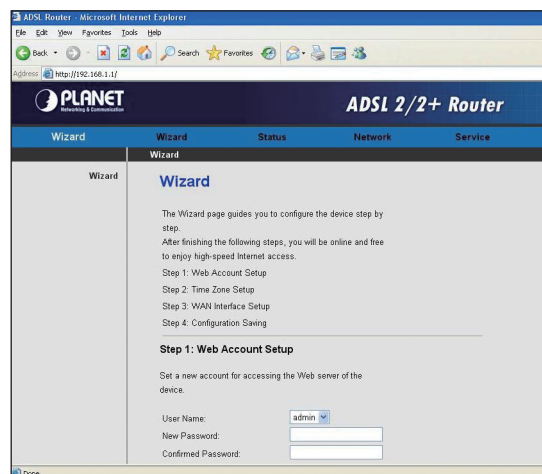


STEP 3 : Connect the Power, then press the button . Check the LEDs on the front panel are on accordingly



STEP 4 : Open web browser, type the default IP address (<http://192.168.1.1>)

**User name: admin
Password: admin**



Note: Please refer to the User's manual in CD-ROM for more information