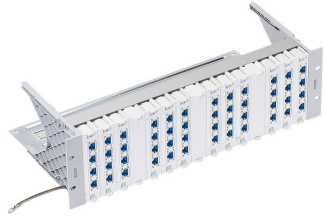


Product information

19" 3U Global Patch Panel 48xRJ45/s, Cat. 6, partly populated

R302360
1 pcs



010.2053

- 19" 3U Global patch panel/s incl. cable tie shelf
- 12 connection module holders Global/s
- 3 Global blind covers
- Grounding system
- 48 Cat. 6 connection modules, RJ45/s incl. EMC covers and dust covers
- Labeling strips
- 19" mounting kit
- Cable ties
- Installation instructions

Technical Data

DESCRIPTION [UNIT]	VALUE/VALUE RANGE
Standard / norm	EN 50173-1 IEC 60603-7: Electrical Characteristics of the Telecommunication Outlets ISO/IEC 11801
Protection class IP	IP 20
PoE	Yes
Shielding connector (A)	shielded
Connector type (A)	RJ45
Category connector (A)	Cat. 6
Number of connectors (A)	48
Holder for connector / module	Module holder
Assembly	partly populated
Fastening	19 "
Rack mounting version	patch panel
Capacity (ports)	60
Amount of height units	3 U

Mechanical Data

DESCRIPTION [UNIT]	VALUE/VALUE RANGE
Dimensions	482.6 mm x 132.5 mm x 221.0 mm / 19 in x 5.217 in x 8.701 in (W x H x D)
Color Code NCS	S 2502-B
Material	steel: DC01 (1.0330), 1.5 mm / aluminum / plastic: PA66, PC, fiber-glass reinforced, halogen-free

Modular patch panel accommodating up to fifteen connection module holders Global/s, installation-friendly thanks to snap-and-go technique, featuring a complete grounding system and Global blind cover. Designed to accommodate the R&M security and the R&M environment system, with its 3-level protection concept: color coding, mechanical coding, locking option. Exchangeable labeling strips, integral cable tie shelf, fastening kit,